



edelstahl design beschlaege

beschlag 400

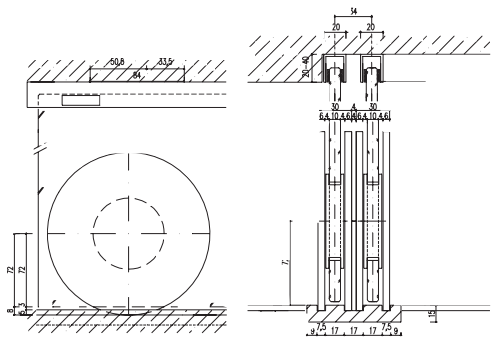
schlichtes edelstahlrad

plain stainless steel wheel

if Design
Award
Winner
2003



puristisches design, stringente loesung. gedrehte radscheiben beidseitig des tuerblattes laufen in einer genuteten bodenschiene. die last wird nach unten abgetragen. nicht nur tueren zwischen raeumen, ganze waende oder auch nur tueren vor schraenken sind das geeignete einsatzgebiet vom edelstahlrad 400. vor allem bei schweren materialien oder bei fehlenden montagemoeglichkeiten auf wand oder decke haengend ist das rad optimal eingesetzt.



simple design, stringent solution. revolving wheel discs run in a grooved floor track on both sides of the door leaf. the weight is transferred downwards. not only doors between rooms but even complete walls or doors in front of cabinets are suitable functions for the stainless steel wheel 400. particularly in case of heavy materials or potential installation possibilities on the wall or suspended from the ceiling the wheel can be optimally used.

im buerobereich trennen und verbinden durch verschiebbare glaswaende. linke seite: offenes wohnen. grosszuegige badgestaltung.

separate and connect in the office field by means of sliding glass walls. left-hand side: open living. spacious bath design.

einsatz im officebereich:
das buero wird nur durch die
glasanlage vom nebenraum
abgetrennt. der raum bleibt
offen und grosszuegig.

*use in the office:
the office is separated from
the adjoining room by the
glass system. the room
remains open and spacious.*





das edelstahlrad
läuft leicht und
ruhig. bueroloesung:
verschiebbare fronten
vor regalen.

*the stainless steel
wheel runs smoothly
and silently.
office solution:
sliding fronts to
shelves.*

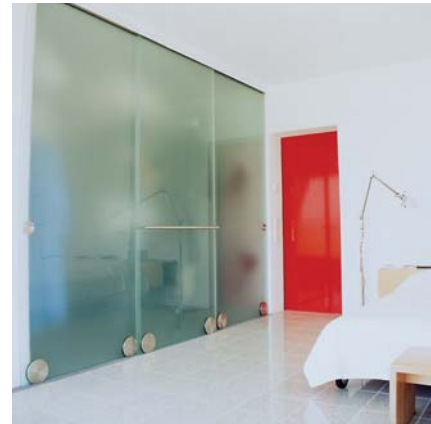


schrankschrankwand mit glas-
und spiegeltüren.
bodenschiene aus
grauem polyamid im
granit flächenbündig
eingelassen.

*cupboard unit with
glass and mirror doors.
floor track made of
grey polyamide, evenly
embedded in the
granite.*

alle türblattmaterialien und -stärken sind möglich. edelstahlrad auf satiniertem glas, edlem furnierholz, schwarzem granit oder lackierten flächen. die bohrung mit 70 mm nimmt die zweiteilige felge mit grossem kugellager auf. die radscheiben werden mit einer zentrischen schraube verdrehsicher verbunden. das türblatt wird oben in einem u-profil gehalten und gefuehrt. je nach material fuer geraeuschlosen lauf ausgefuehrt. vorzugsweise wird das u-profil in der decke eingelassen. bei holzblaettern kann ein t-profil zur fuehrung dienen. alle teile edelstahl massiv, oberflaeche fein gebuerstet.

any materials and thicknesses of the door leaf are possible. stainless steel wheel on satin-frosted glass, noble veneered wood, black granite or painted surfaces. the 70 mm drilling takes up the dividing rim with the large ball bearing. the wheel discs are connected with a centric screw with locking pin. the door leaf is supported and guided at the top in a U-profile. lined for silent running, depending on the material. preferably, the U-profile is embedded into the ceiling. in case of wooden leaves a T-profile can serve as a guide. all parts made of solid stainless steel, surface finely brushed.



fuer mehr bildmaterial
informieren Sie sich
bitte im internet unter
www.astec-design.de.

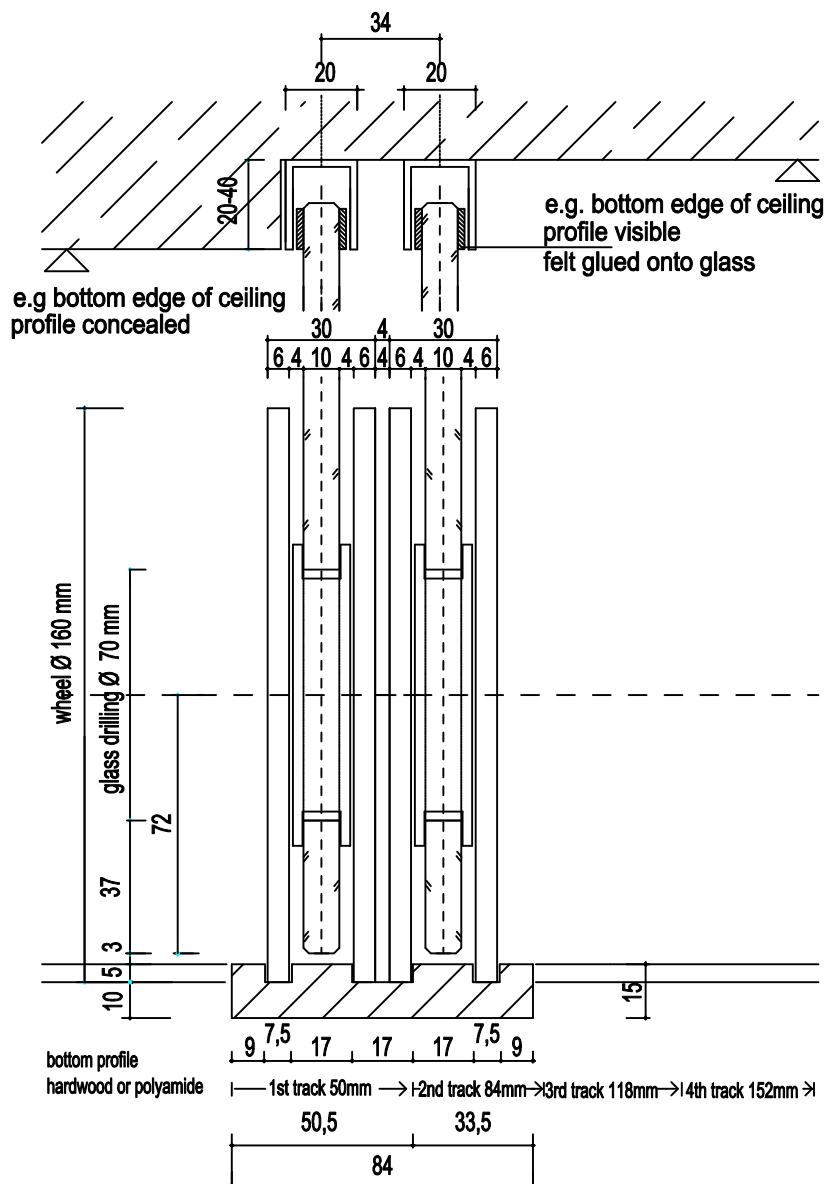
*for more pictures,
please visit our
homepage under
www.astec-design.de.*

technical drawings

stainless steel roll fitting for sliding doors
 astec 400/410 - registered no. 202 19 810.3 german patent office

01.03.2007

aluminium U-profil 20/40/2 or 20/20/2 mm natural, anodised EV1 or coated in white,
 for lifting-out purposes only 5mm height are required, however, the pane should have a
 solid retention into the profile which must be firmly fastened.

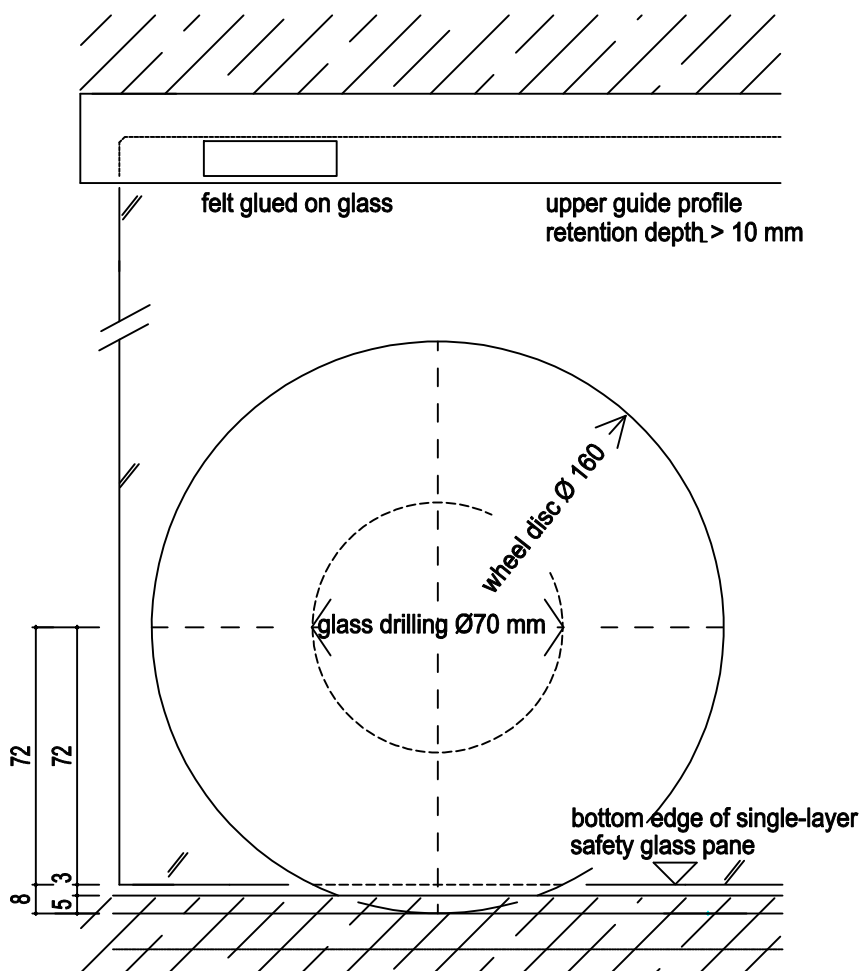


art. no. 4.00.01
 roller 400
 diameter 160 mm

technical drawings

stainless steel roll fitting for sliding doors
 astec 400/410 - registered no. 202 19 810.3 german patent office

01.03.2007



art. nr. 4.00.01

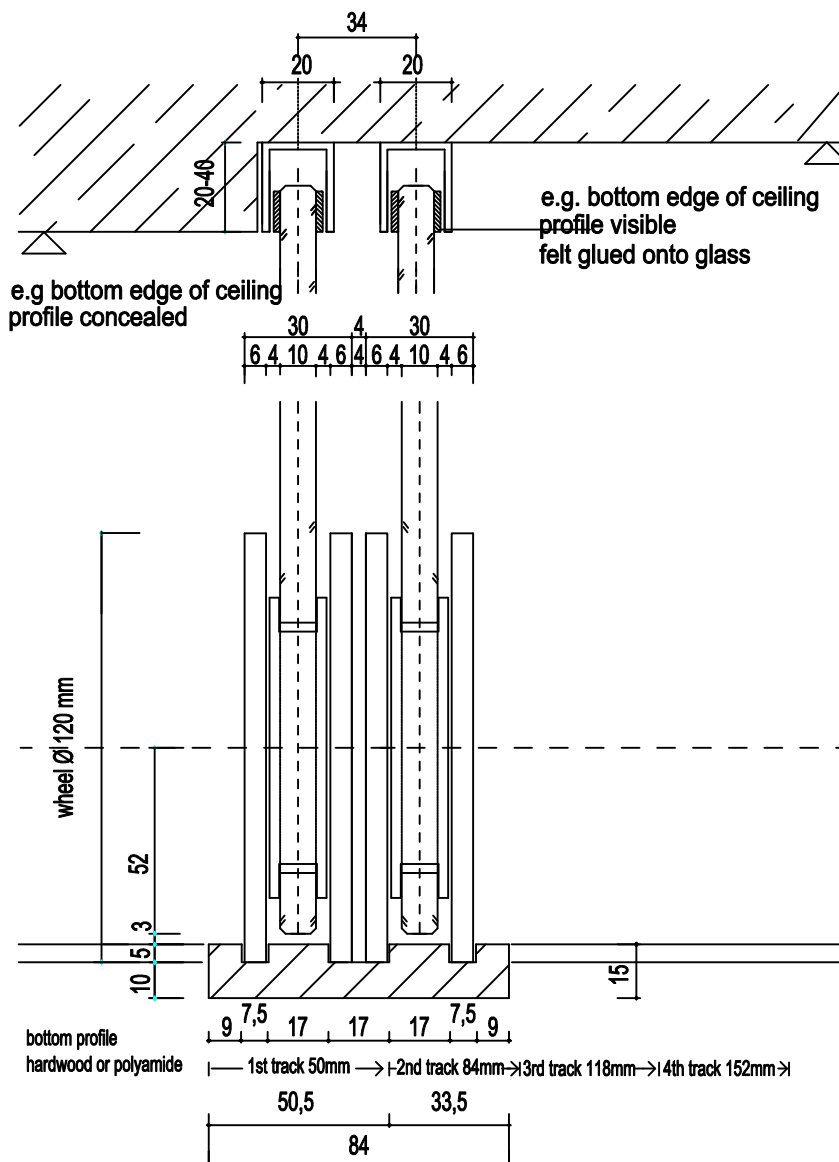
laufrolle 400
 durchmesser 160 mm

technical drawings

stainless steel roll fitting for sliding doors
 astec 400/410 - registered no. 202 19 810.3 german patent office

01.03.2007

aluminium U-profil 20/40/2 or 20/20/2 mm natural, anodised EV1 or coated in white,
 for lifting-out purposes only 5mm height are required, however, the pane should have a
 solid retention into the profile which must be firmly fastened.

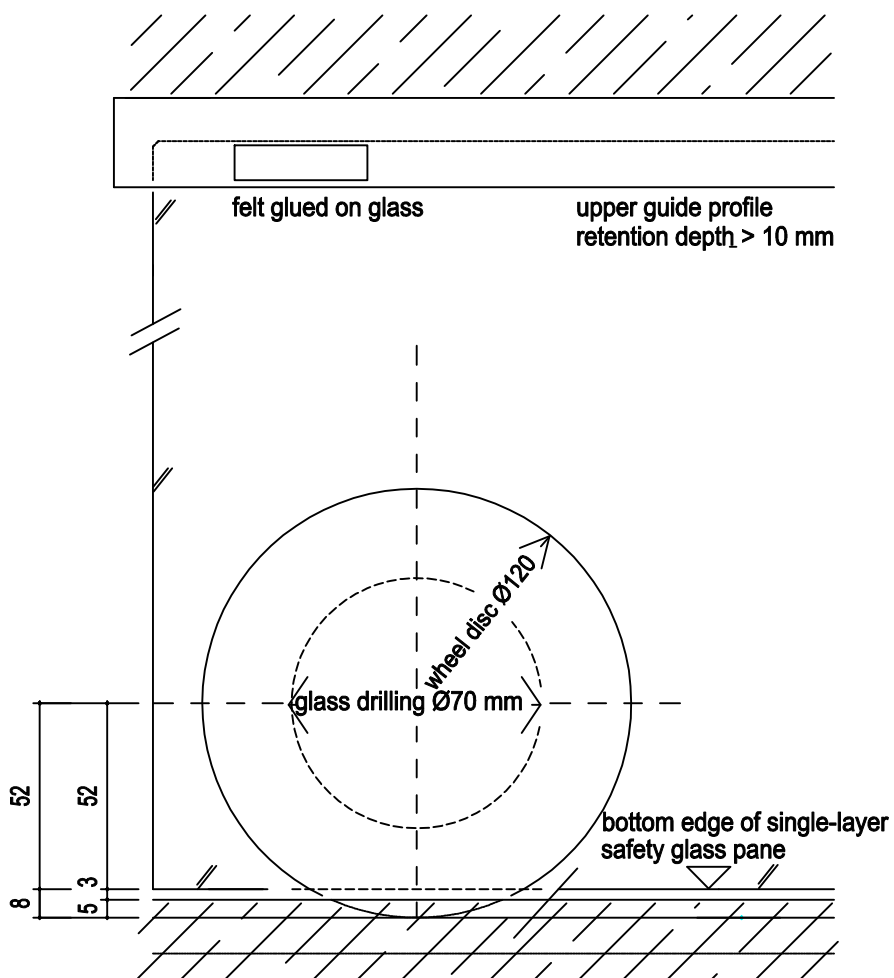


art. no. 4.00.03
 roller 400
 diameter 120 mm

technical drawings

stainless steel roll fitting for sliding doors
 astec 400/410 - registered no. 202 19 810.3 german patent office

01.03.2007



art. no. 4.00.03

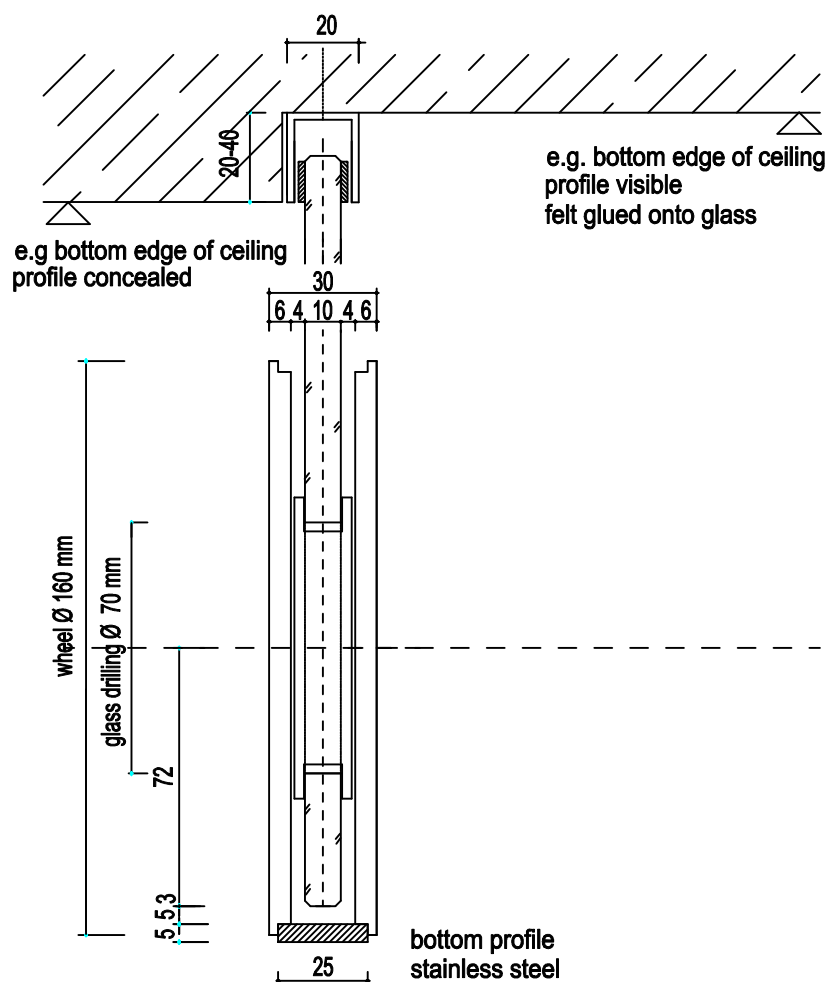
roller 400
 diameter 120 mm

technical drawings

stainless steel roll fitting for sliding doors
 astec 400/410 - registered no. 202 19 810.3 german patent office

01.03.2007

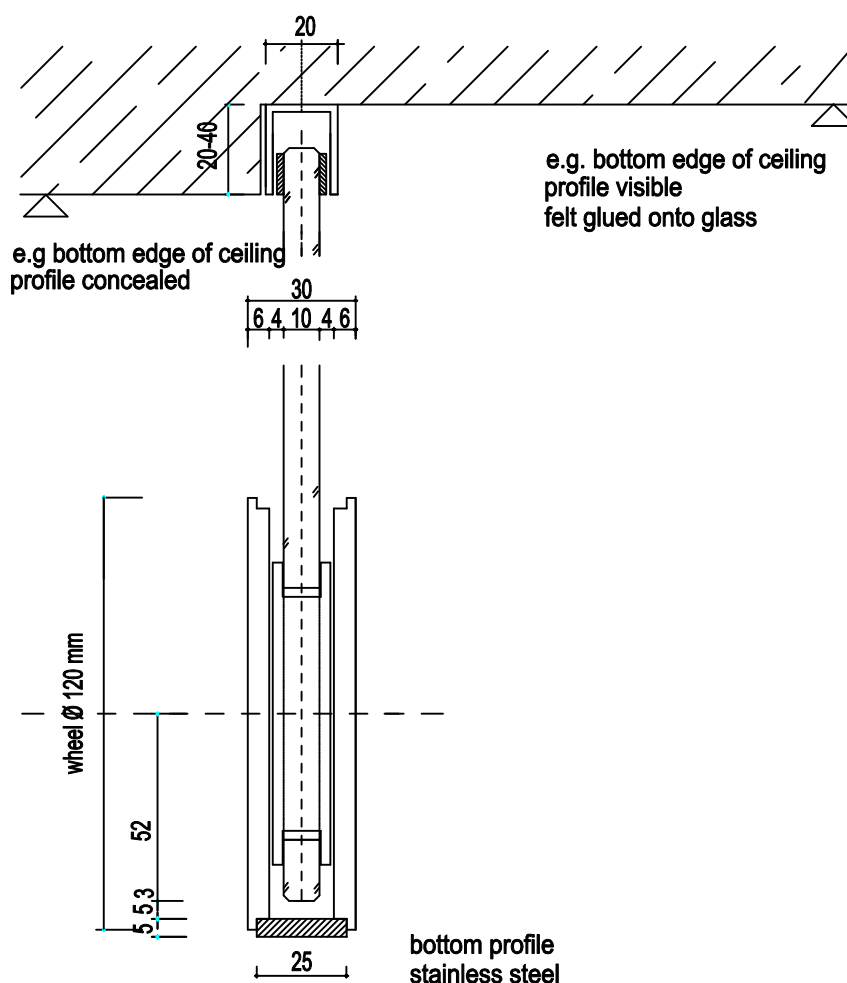
aluminium U-profil 20/40/2 or 20/20/2 mm natural, anodised EV1 or coated in white,
 for lifting-out purposes only 5mm height are required, however, the pane should have a
 solid retention into the profile which must be firmly fastened.



art. no. 4.10.01

roller 410
 diameter 160 mm

aluminium U-profil 20/40/2 or 20/20/2 mm natural, anodised EV1 or coated in white,
 for lifting-out purposes only 5mm height are required, however, the pane should have a
 solid retention into the profile which must be firmly fastened.



art. no. 4.10.03

roller 410
 diameter 120 mm