

**System: Laufschiene eingetutet oder aufgeschraubt, keine Nut im Boden, ohne Blende, mit verdecktem Clip-Laufwerk, für 2 Glastüren bis 16 kg. Design Alu-Glasfixierungsprofil 20/12 mm – Inslide**

System: Top track surface or groove mounted, no groove on the bottom, without panel, with clip-on running gear for concealed fixing, for 2 glass doors up to 16 kg.

Design aluminium glass fixing profile 20/12 mm – Inslide

Système: Rail de roulement dans rainuré ou vissé en applique, aucune rainure dans le sol, sans cache, avec chariot de roulement à clipsage pour montage caché, pour 2 portes en verre de 16 kg max.

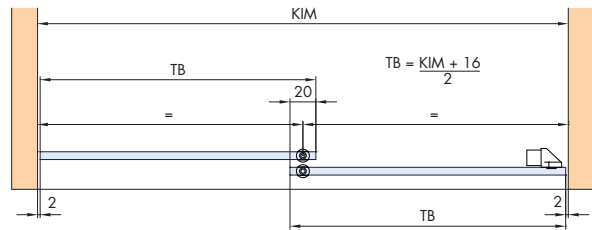
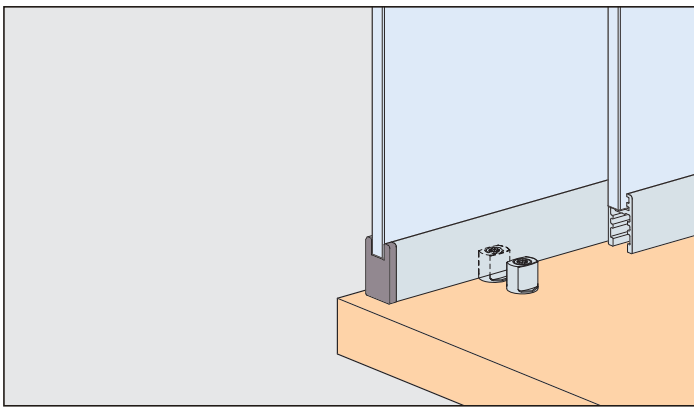
Design profile de fixation du verre en alu 20/12 mm – Inslide

**Klebstoff-Empfehlungen für Glas:**

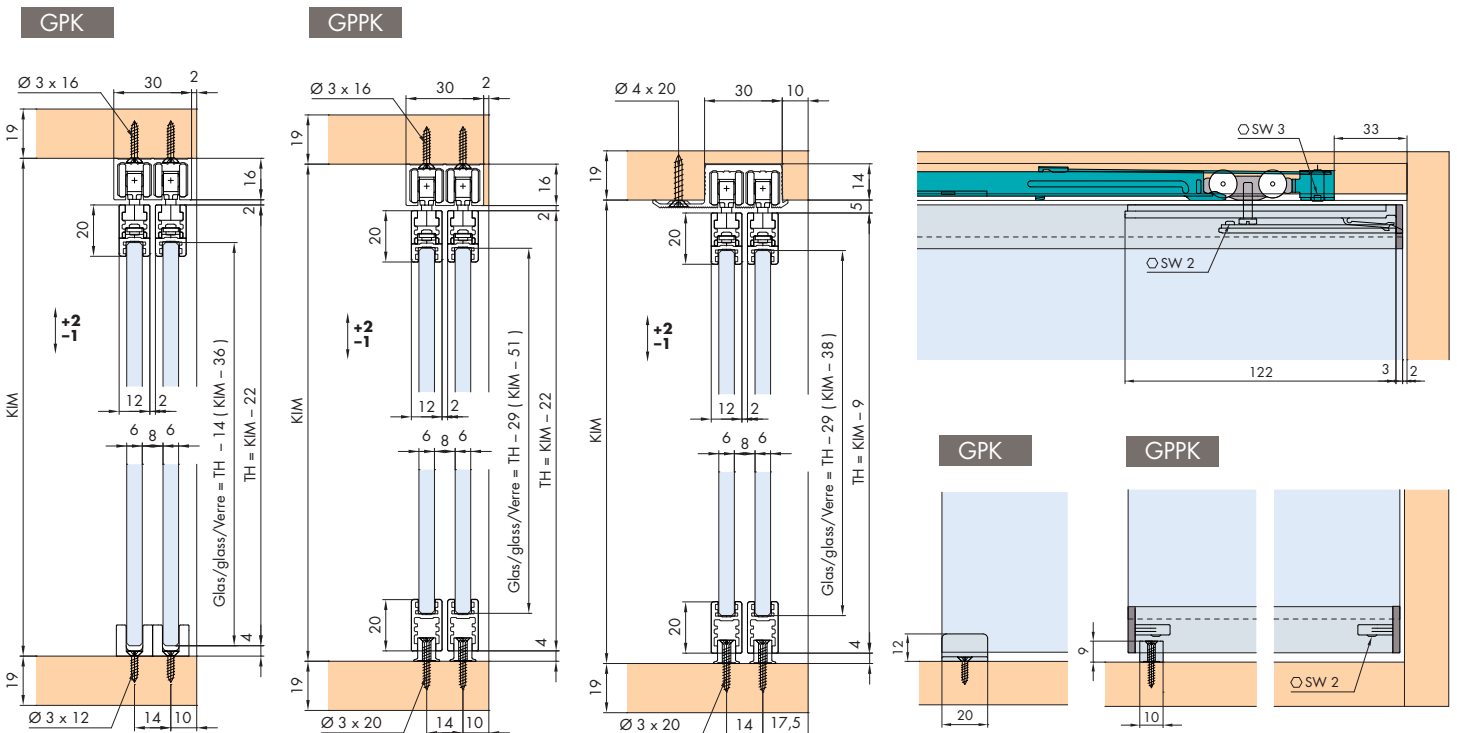
Recommended adhesive for glass:

Colle recommandée pour verre:

- ELCH PRO 3B Silikon 71
- 3M Scotch Weld DP 105
- Ergo, 6520 MS-Hybrid-Polymer



**Einbaubeispiele / Mounting examples / Exemples de montage**



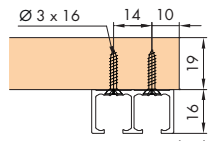
Dämpfung optional / Soft closing optional / Amortissement facultatif 68/69

Glasempfehlung / Glass recommendation / Types de verre recommandés 74

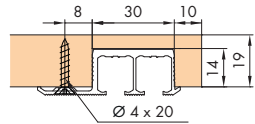
**Befestigungsvarianten**

Mounting options

Variantes de fixation



**E zum Aufschrauben**  
surface mounted  
à visser en applique



**F zum Schrauben**  
screwed on  
à visser

**Garnituren / Sets / Garnitures**

GPK		No. 053.3264.071	
2 Türen Doors Portes			
		4x	4x
		2x	1x
		2x	

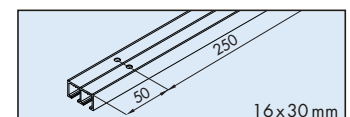
GPPK		No. 053.3265.071	
2 Türen Doors Portes			
		4x	4x
		2x	1x
		2x	4x



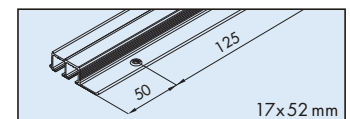
**Türgewichte**  
Panel weights  
Poids de portes **75**

**Zubehör / Accessories / Accessoires**

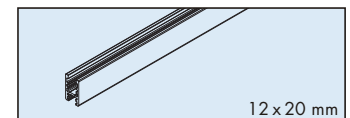
**E Doppelaufschiene Alu eloxiert, gelocht, zum Aufschrauben** 2500 mm 053.3247.250  
Dual top track aluminium anodized, pre-drilled, surface mounted 3500 mm 053.3247.350  
Rail de roulement double en alu anodisé, perforé, à visser en applique 6000 mm 053.3247.600



**F Doppelaufschiene Alu, gelocht, zum Schrauben** 2500 mm 053.3248.250  
Dual top track aluminium, pre-drilled, screwed on 3500 mm 053.3248.350  
Rail de roulement double en alu, perforé, à visser 6000 mm 053.3248.600



**Glasfixierungsprofil, Alu eloxiert, zum Kleben** 2500 mm 053.3250.250  
Glass fixing profile, aluminum anodized, for glueing 3500 mm 053.3250.350  
Profilé de fixation du verre, en alu anodisé, à coller 6000 mm 053.3250.600



**Klebstoff ELCH PRO 3B Silikon, 310 ml** 098.0027.000  
Glue ELCH PRO 3B silicone, 310 ml  
Colle ELCH PRO 3B silicone, 310 ml

