



**CHIUDIPIORTA A
PAVIMENTO PER
PORTE DI GRANDI
DIMENSIONI E PESO A
POTENZA REGOLABILE**

750

**FLOOR SPRING
WITH ADJUSTABLE
POWER FOR
LARGE AND VERY
HEAVY DOORS**

**MAB SEMPRE
QUANDO
C'È UNA PORTA**

**MAB MAKES
DOOR
CLOSING EASY**

750

CARATTERISTICHE:

- **Forza regolabile** in continuo **EN 3-6** che unita ad alta efficienza permette una vera personalizzazione delle forze di apertura e chiusura.
- **Indicato** per porte di grandi dimensioni e peso fino a **300 Kg.**, grazie alla grossa cilindrata del pistone che assicura un reale controllo idraulico anti-abbrivio.
- **Chiusura** sotto controllo idraulico da circa 175° in entrambi i sensi. A richiesta disponibile versione con controllo da 180°. Mano da specificare.
- **Due valvole** termostatiche indipendenti per accurato controllo di chiusura generale, scatto o smorzamento finale.
- **Fermaporta** a 90°, 105° o senza fermo.
- **Effetto freno** all'apertura.
- **Valvola** di sovrappressione.
- **Ampia regolazione** in tutti i sensi nella cassetta a murare per recuperare eventuali disallineamenti o dislivelli senza smontare la porta.
- **Corpo** in ghisa.
- **Cassetta** a murare zincata a caldo.
- **Varietà di perni disponibili:** italiano, tedesco, francese.
- **Perno intercambiabile** da 0 a + 30 mm.
- **Finiture architettoniche:** piastra in acciaio inox lucido o satinato e ottone lucido.
- **Ritardo di chiusura** (optional) tra circa 175° e 80° controllato da valvola idraulica. Con questa opzione non si ha lo scatto finale.
- **Tutti i modelli** hanno certificazione prodotto **EN1154**. La versione senza fermaporta ha la conformità **CE**

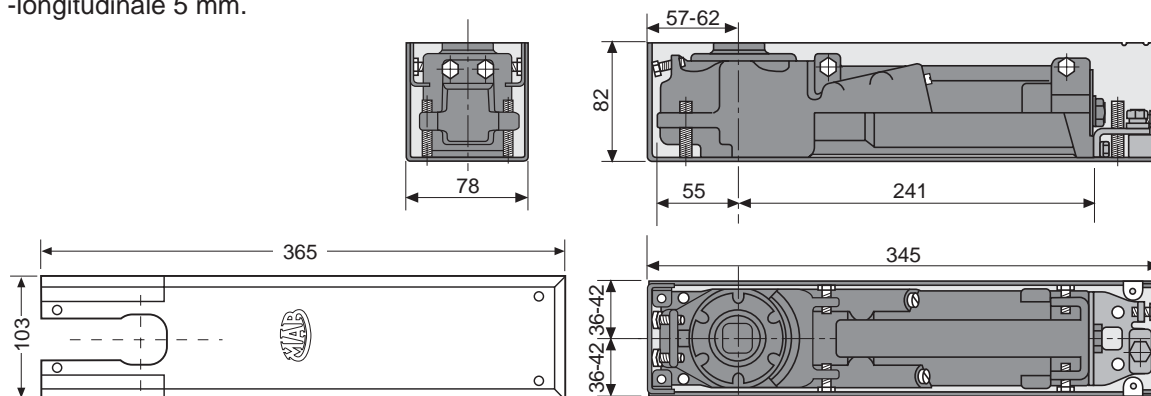


FEATURES:

- **Adjustable power EN 3-6** by means of stepless governor which coupled with high efficiency allows a real personalization of opening/closing forces.
- **Recommended for large and very heavy doors** up to **300 kg.** thanks to large piston displacement that ensures a real hydraulically controlled damping action.
- **Closing from approx 175°** in both swings under hydraulic control. Handed version with control from 180° available on request.
- **Two independent thermostatic valves** for precise adjustment of general closing speed, final latch or final damping.
- **Hold open** at 90°, 105° or non hold open.
- **Back Check** effect.
- **Overpressure relief valve** to protect unit against abuse.
- **Large range of adjustment** within cement box to solve possible alignment problems on site without taking down the door.
- **Cast iron** body.
- **Cement box** in hot zinc plated steel.
- **Variety of available spindles:** square Italian, square French, rectangular German.
- **Interchangeable spindle** from 0 to + 30 mm.
- **Architectural finishes:** coverplate in polished s/steel, satin s/steel, polished brass.
- **Delayed closing action** (optional) between approx. 175° and 80° controlled by hydraulic valve. With this option final latch is not performed.
- **All models** have quality certification **EN1154**. Version without Hold Open, has **CE** conformity.

DIMENSIONI E REGOLAZIONE IN CASSETTA

- verticale 9 mm.
- orizzontale 6 mm.
- longitudinale 5 mm.



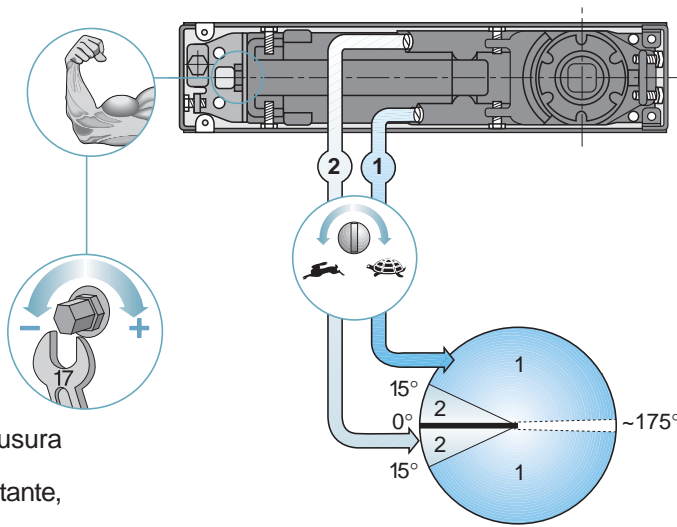
DIMENSIONS AND ADJUSTMENT WITHIN CEMENT BOX

- vertical 9 mm
- side 6 mm
- front 5 mm

REGOLAZIONE DELLA VELOCITÀ E POTENZA

Avvitando il registro $\square 17$ mm, la forza aumenta. Svitando il registro, la forza diminuisce. Con 10 giri completi si passa da forza minima a forza massima.

Le valvole termostatiche ① e ② controllano in modo indipendente la velocità di chiusura generale $\sim 175^\circ - 15^\circ$ e la velocità finale $\sim 15^\circ - 0^\circ$ (costante, smorzata o con scatto). Con 3 giri completi in senso antiorario si passa da valvola chiusa a velocità massima.



POWER AND CLOSING SPEED

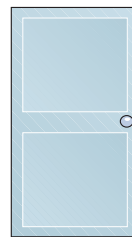
Turn clockwise force adjuster $\square 17$ mm to increase power. Turn anti-clockwise to decrease power. Starting from the minimum power, with 10 complete turns maximum power is reached.

Thermostatic valves ① and ② control independently the general closing speed from $\sim 175^\circ$ to 15° and the final closing from $\sim 15^\circ$ to 0° (constant, damping or latching) Starting from valve closed, maximum speed is reached with three full turns anti-clockwise.

DIMENSIONI MASSIME DELLE PORTE

Forza minima
Min. power **3** = 24 Nm

Forza massima
Max. power **6** = 60 Nm

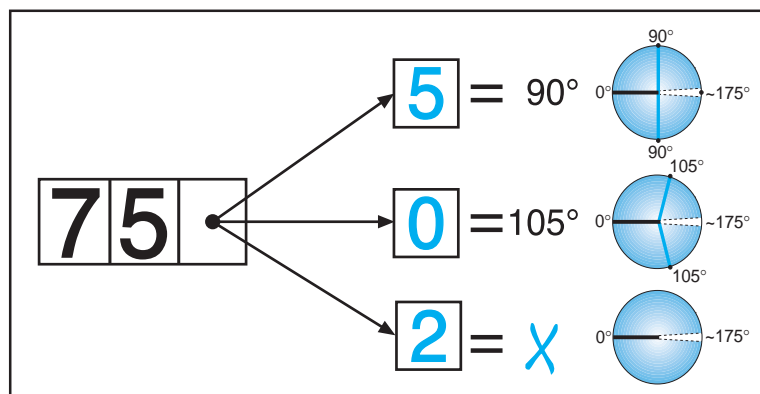


min. 850 x 2300 **Kg** 300

max. 1400 x 2500 **Kg** 300

RECOMMENDED DOOR SIZES

CODICE ARTICOLO SECONDO ANGOLO DI FERMO



ARTICLE REFERENCE ACCORDING TO HOLD OPEN

CERTIFICAZIONI EN 1154

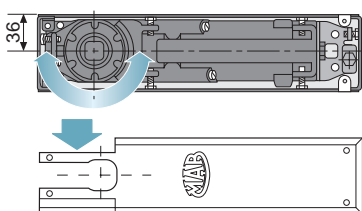
CERTIFICATION EN 1154



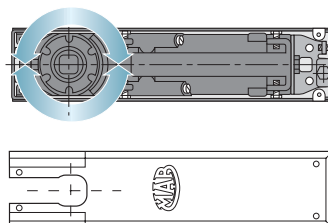
MONTAGGIO UNIVERSALE

UNIVERSAL MOUNTING

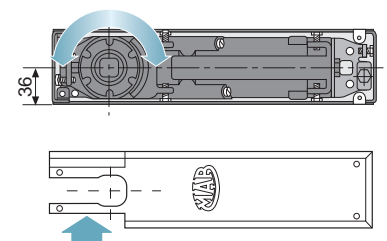
DESTRA - RIGHT HAND

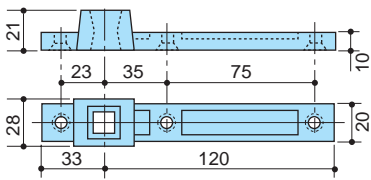


VENTOLA - DOUBLE ACTION



SINISTRA - LEFT HAND

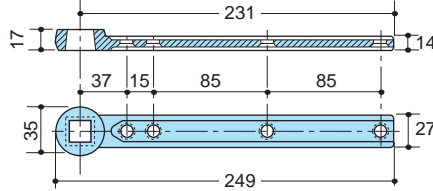




AC 115

Braccio inferiore reversibile in acciaio per porte a ventola. Cava quadro italiano.

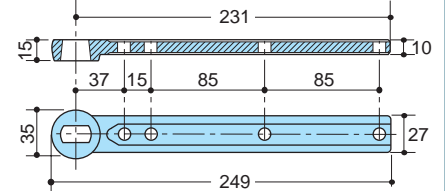
Reversible bottom arm in steel for double action doors. Square Italian spindle.



AC 297

Braccio inferiore in acciaio per porte a ventola. Cava quadro italiano.

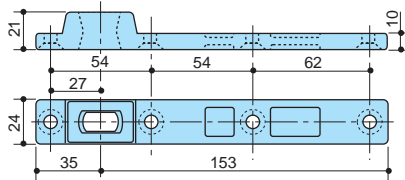
Bottom arm in steel for double action doors. Square Italian spindle.



AC 298

Braccio inferiore in acciaio per porte a ventola. Cava rettangolare tedesca.

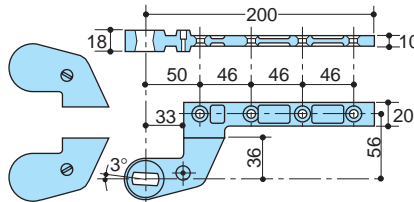
Bottom arm in steel for double action doors. Rectangular German spindle.



AC 393

Braccio inferiore reversibile in acciaio per porte a ventola. Cava rettangolare tedesca.

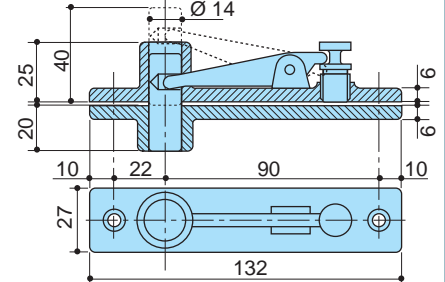
Reversible bottom arm in steel for double action doors.. Rectangular German spindle.



AC 392

Braccio inferiore destro e sinistro in acciaio per porte a battente, interasse mm. 36. Cava rettangolare tedesca.

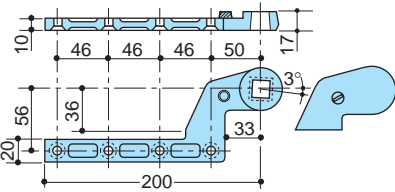
Right and left bottom arm in steel for single acting doors, 36 mm. offset. Rectangular German socket.



AC 8

Perno superiore per porte a ventola.

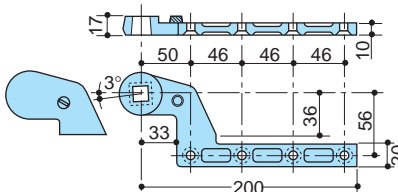
Double acting top pivot.



AC 385

Braccio inferiore destro in acciaio per porte a battente, interasse mm. 36. Cava quadro italiano.

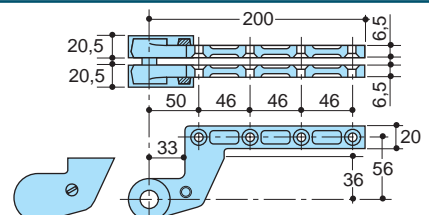
Right bottom arm in steel for single acting doors, 36 mm. offset. Square Italian spindle.



AC 386

Braccio inferiore sinistro in acciaio per porte a battente, interasse mm. 36. Cava quadro italiano.

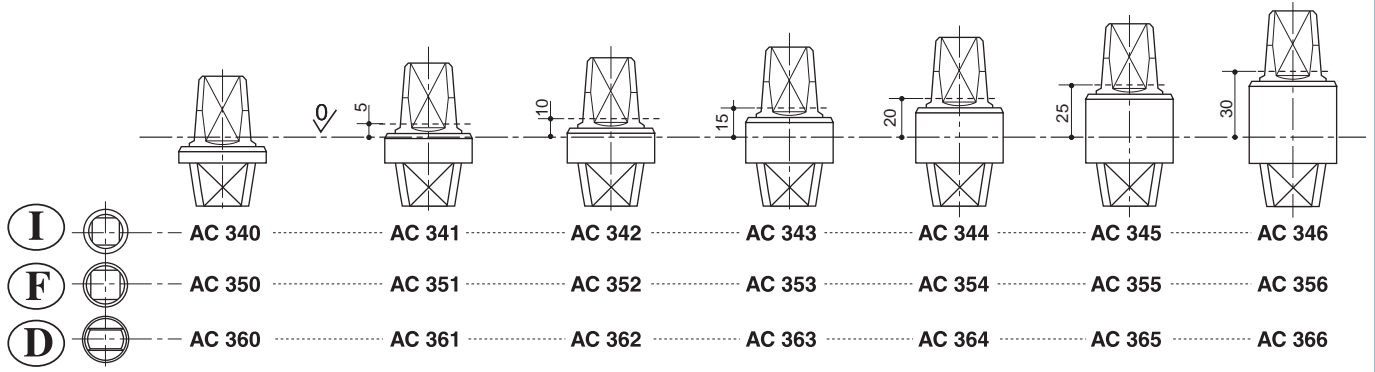
Left bottom arm in steel for single acting doors, 36 mm. offset. Square Italian spindle.



AC 384

Perno superiore in acciaio per porte a battente sinistre o destre, interasse mm. 36.

Top pivot in steel for left or right doors 36 mm. offset.



SPECIFICA PER CAPITOLATI.

Chiudiporta a pavimento a forza regolabile in continuo, certificato EN 3-6, CE, due valvole di velocità a canali idraulici indipendenti, perno intercambiabile, freno meccanico all'apertura, valvola di sovrappressione, regolazione verticale di 9 mm. a porta montata, per uso gravoso, portata 300 Kg., **MAB 750**

SPECIFICATION.

Heavy duty floor spring with stepless power adjustment, certified EN 3-6, CE, two closing speed valves with independent hydraulic circuits, interchangeable spindle, mechanical Back Check, overpressure relief valve, vertical adjustment of 9 mm within cement box, max. load 300 kg, **MAB 750.**





V3S GLASS SYSTEMS BVBA

Bossestraat 4
9420 Erpe
BELGIUM

Tel. +32 53 80 87 77
Fax +32 53 80 82 64

website: www.v3s-glass-systems.be
e-mail: info@v3s-glass-systems.be